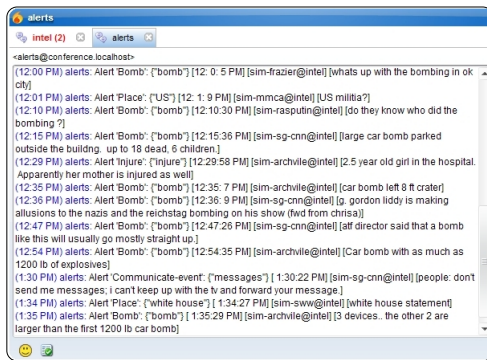


## Semantex Chat™ - Automated Monitoring and Alerts

Chat rooms and Instant Messaging are changing communication paradigms around the globe. With complex free text and “noisy data” that typically includes slang, acronyms and misspellings, these new modes of communication threaten to overwhelm the analytical capabilities of many organizations. Keyword-based searches can identify important concepts and use them to trigger real-time alerts, but the absence of context may cause these basic systems to inundate the user with insignificant alerts or to miss critical information.

Through the application of multiple innovations in text analytics, Semantex Chat™ provides users in the military, intelligence and law enforcement communities a flexible, automated monitoring and alerting solution specifically designed to extract the most significant information from chat conversations and Instant Messaging. The underlying Semantex™ platform identifies entities, relationships and events which can be used individually or in combination to set alert triggers. Sophisticated algorithms sort through “noisy data” to ensure that key information is not overlooked. And Semantex Chat™ analyzes each new communication independently in the context of the ongoing conversation, and in the context of the entire collection of related conversations.



(12:54 PM) alerts: Alert 'Bomb': {'bomb'} [12:54:35 PM] [sim-archville@intel] [Car bomb with as much as 1200 lb of explosives]  
 (1:30 PM) alerts: Alert 'Communicate-event': {'messages'} [1:30:22 PM] [sim-sg-cnn@intel] [people: dont send me messages; i can't keep up with the tv and forward your message.]  
 (1:34 PM) alerts: Alert 'Place': {'white house'} [1:34:27 PM] [sim-sww@intel] [white house statement]

Semantex Chat™ alerts for string matches, events and places

### Semantex Chat™

Semantex Chat™ provides real-time analysis of utterances in chat rooms and an alerting system that is of immense value to leaders and analysts for event and scenario awareness.

Semantex Chat™ monitors and processes logs of chat, but more importantly real-time utterances in XMPP (jabber) and IRC chat channels. Alerts are generated when contextual information matching a specified interest is found, enabling leaders to make quicker, more informed decisions.

### Monitor Events, Relationships, Entities

Alerting rules can be set for strings, relationships between personal entities (e.g., staff), for geopolitical entities (locations, facilities, etc.) and for events.

Semantex™ supports many entity types and events out of the box. Alerts in Semantex Chat™ are set independent of the core system depending on requirements for the monitoring agent.

### The World Model

Utterance-level information is added to the overall log data allowing useful information to be gained from turns in a conversation, from the entire conversation, and from the context of entire collections of related conversations.

### Innovation

Semantex Chat™ leverages the Semantex™ platform's near-linear scalability in processing large volumes of multi-participant conversations in real time. Uniquely, Semantex Chat™ handles noisy data that includes slang, acronyms, sentence fragments and misspellings.

### Customize

Semantex™ and Semantex Chat™ can be customized and alerts can be set for surface strings, events, relationships, and locations specific to a domain to take into account terminologies and relationships associated with a given field or specialty (e.g., X-31, for aircraft).